



NETWORKS

Serving all electricity customers

HELPING YOU READ YOUR METER

**How to read your electricity
meter and submit a reading**
esbnetworks.ie



HOW TO READ YOUR METER

You can identify your meter from the four types listed here:

STANDARD REVOLVING DISC METER

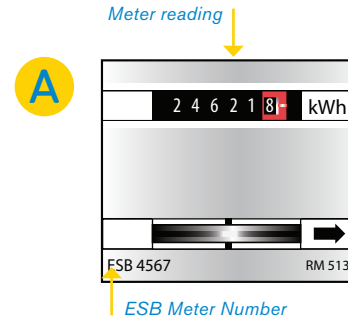
This meter is the most common meter type in domestic dwellings (meter A). It has a revolving disc and one row of numbers.

This meter records your electricity usage on a single register and will be installed if you are on an Urban 24 Hour or Rural 24 Hour Tariff.

To read your revolving disc meter:

- note the number on the display from left to right,
- ignore any figures in red or any figures surrounded by a red box.

Note: If you have night storage heaters, you may have two of these meters installed or, alternatively, a single Day and Night meter (meter B or D).



TIME OF DAY REVOLVING DISC METER

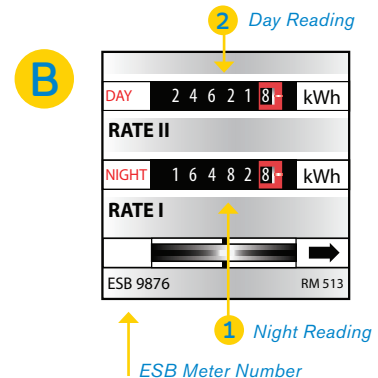
DAY AND NIGHT

This meter records your day time and night time electricity usage (meter B). If you are on a **Time of Day tariff**, it is likely that you will have this type of meter. A separate external timeswitch will have been installed to control the tariff (clock always set to GMT).

The meter may have numbers 1 and 2 or the Roman Numerals I and II against each register. On all ESB Networks' meters, '1' is your **Night Consumption** and '2' is your **Day Consumption**.

To read your revolving disc meter:

- note the numbers from left to right on each of the registers,
- ignore any figures in red or any figures surrounded by a red box.



STANDARD ELECTRONIC METER

These are the most common types of electronic meters installed in domestic dwellings (meter C). Standard electronic meters record your electricity usage on a single display and are installed if you are on either an Urban 24 Hour or Rural 24 Hour Tariff.

Take your reading from the display screen:

- Record consumption figure on display reading from left to right.
- If there is a blue button at the top right hand corner do not press it to take a reading, as this will cause the display to automatically start changing before it reverts to the correct consumption reading.

C



TIME-OF-DAY ELECTRONIC METER

DAY AND NIGHT

On all 'Time of Day' (Day and Night) electronic meters there is a blue (sometimes yellow) button (meter D). This is used to scroll the information in the display. By pushing this button the following information will be displayed and you can make a note of it:

Display 1 ('o') – 24 Hour Total kWh (units) ('o' is initial digit).

Press once ('d') – Current Date (dd.mm.yy).

Press twice ('t') – Current Time (hh:mm:ss G.M.T.).

Press three times ('o') – 24 Hour Total kWh (units) (Same as Display 1).

Press four times ('2') – Day kWh (units) 08:00 to 23:00 G.M.T. ('2' is initial digit on display).

Press five times ('1') – Night kWh (units) 23:00 to 08:00 G.M.T. ('1' is initial digit on display).

Press six times ('test') – This is to test the display and will revert to default display after 60 seconds.

D



ELECTRICITY METER READINGS ARE IMPORTANT!

- 1 ESB Networks aims to call to your premises to read your electricity meter four times a year. At a minimum, we have a regulatory obligation to ensure that we **get at least one actual meter reading each year**. This can be a customer supplied reading.
- 2 Sometimes ESB Networks cannot gain access to read your meter. If possible, our meter reader will leave a postcard which gives our contact details. **You can then read the meter yourself and submit a reading by phoning, texting or emailing it to us – see contact details below.**
- 3 Regular meter readings ensure that your usage is not estimated over extended periods. When we record the correct meter readings, or you submit them to us, **you are then going to receive accurate bills from your electricity supplier.**
- 4 In addition, by taking the time to check the reading on your meter regularly **you can monitor and record your usage accurately**. This may help you to identify efficiency improvements and opportunities to reduce your consumption.
- 5 If you have mislaid the key to your outdoor meter cabinet, we will be happy to send you a replacement free of charge – **phone 1850 372 757** (Mon- Fri: 8.30am - 6.00pm, Sat: 8.30am - 1.30pm).
- 6 Remember! If you are **moving in/moving out of a house, apartment or business premises**, please be sure to always submit your meter reading(s) to your supplier at the time of the move.

YOU CAN SUBMIT A METER READING TO ESB NETWORKS AS FOLLOWS:

Please always quote your 11 digit Meter Point Reference Number (MPRN) which is shown on your electricity bill as M10...

CALL US

1850 337 777 (24 hour service)

TEXT US

You can text your MPRN followed by your meter reading(s) to **087 960 9223**

EMAIL US

reading@esb.ie

ONLINE

esbnetworks.ie/readings