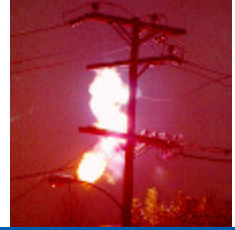


### Risks:

- >Electrocution, Shock or Burns as a result of contact or near contact either directly or indirectly with normally Live Parts or Parts accidentally made Live due to a fault or insulation failure
- >Electricity can be an Ignition source



### Primary Controls

#### The best protection against the hazard of Electricity is distance

- ⚡ Keep Clear
- ⚡ Keep members of the Public clear
- ⚡ Cordon off area
- ⚡ Ensure Electricity supply is switched off before dealing with the Emergency situation
- ⚡ Where ESB Overhead Lines, Sub-Stations or other apparatus is involved make immediate contact with ESB Networks (PTO for details)

### Domestic Premises

- ⚡ Do not touch or move damaged wiring until the installation has been switched out

### Commercial Premises

- ⚡ Do not handle or move electrical equipment until it has been disconnected



### Transformer Sub-Stations

### Switching Sub-Stations

- ⚡ Do Not enter any Sub-Station or any cubicle within unless accompanied by ESB personnel

#### Hazards:

- ⚡ Exposed Live Parts (at High Voltage)
- ⚡ Oil, Compressed Air, SF<sub>6</sub> Gas (Sulphur hexafluoride) etc.



### Overhead Networks

### Fallen Wires

### Contact with Wires

- ⚡ Do not approach victims in contact or close contact with ESB overhead electricity lines or other apparatus
- ⚡ Do not approach fallen wires
- ⚡ Do not approach vehicles or equipment in contact or close contact with ESB lines or other apparatus

**Until it has been confirmed by an ESB Networks Operator that it is safe ( See back for emergency contact details)**

## Contact Voltage



## Step Voltage



## ESB 24 Hr. Emergency Contact Numbers

**National Emergency Services Dedicated Contact  
Telephone No. 021 4542090**

**General ESB Networks 24 Hr. Emergency No. 1850 372 999 (i.e. 1850 ESB 999)**

**Always assume that any Overhead  
Electricity Lines and other Electrical  
Apparatus or Equipment is Live until it  
has been confirmed by an ESB  
Networks Operator that the power has  
been switched off and it is safe.**